

# Roebling Park Restoration Public Information Meeting

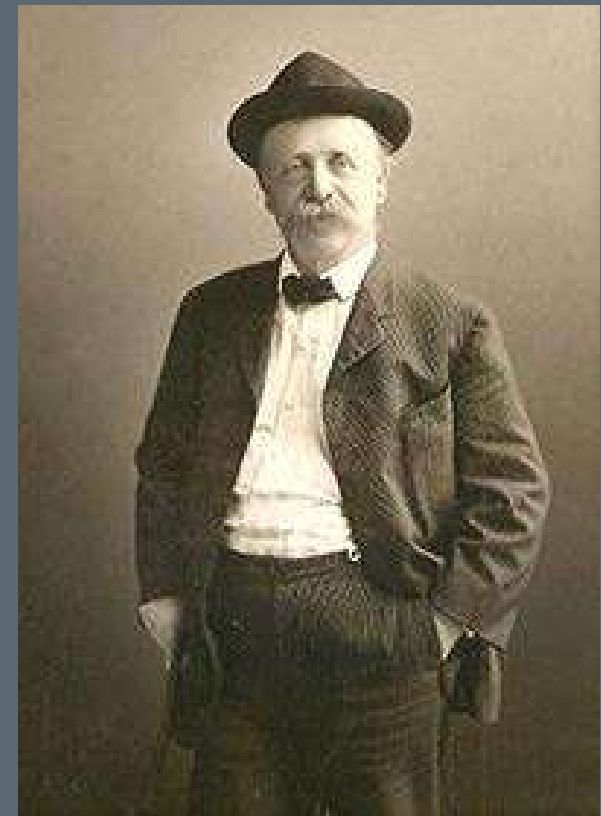
## Agenda

7:00pm - Coffee and Tea

7:10pm - Introduction to Project:  
*Jenn Rogers, County Naturalist, Mercer  
County Park Commission*

7:30 - Restoration Methods and  
Plan: *Mark Gallagher, Vice President,  
Princeton Hydro*

8:00 - Public Q & A



Charles Conrad Abbott;  
1843-1919



# Roebling Park Restoration Public Information Meeting



September 20, 2018

Tulpehaking Nature Center, Hamilton NJ



# Roebbling Park Restoration: Project Team

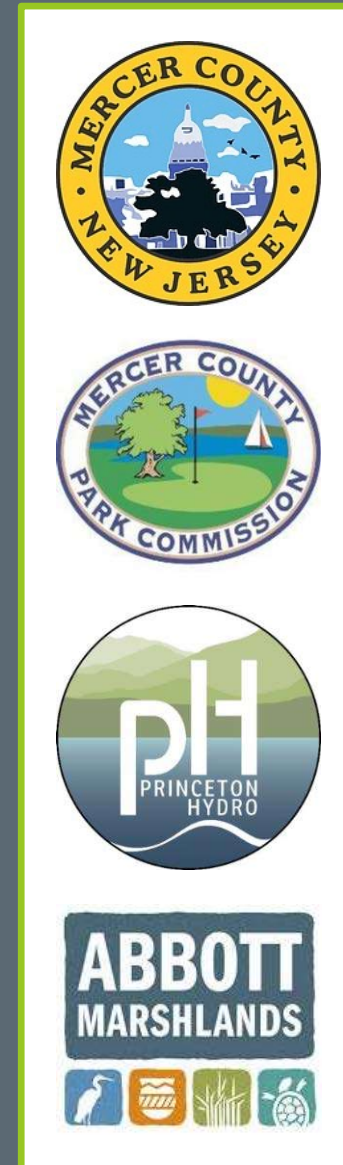
## Mercer County/Park Commission

- Emily Blackman, Senior Planner
- Anthony Cucchi, Superintendent of Parks
- Lisa Fritzingler, Asst. Director of Planning
- Jennifer Rogers, County Naturalist
- Jillian Stark, Land Steward

## Princeton Hydro

- Mark Gallagher, Vice President
- Kelly Klein, Senior Project Manager

## Friends for the Marsh



# Mercer County & Preservation

Since the early 1970's, Mercer County has actively preserved open space and farmland.

The County has preserved over 15,000 acres of land to date.





# Environmental Stewardship in Mercer County



## Habitat Restoration

Baldpate Mountain Reforestation: 8 acres

Fiddler's Creek Preserve Reforestation: 40 acres

Mercer Meadows Grassland Restoration: 435 acres

Hopewell Borough Park Shrubland Restoration: 3 acres

## Research and Citizen Science

Amphibian Crossing Project

Grassland Breeding Bird Survey

Eastern Bluebird Nest Box Monitoring

Fiddler's Creek Bird Banding Station

Northern Saw-whet Owl Banding Project

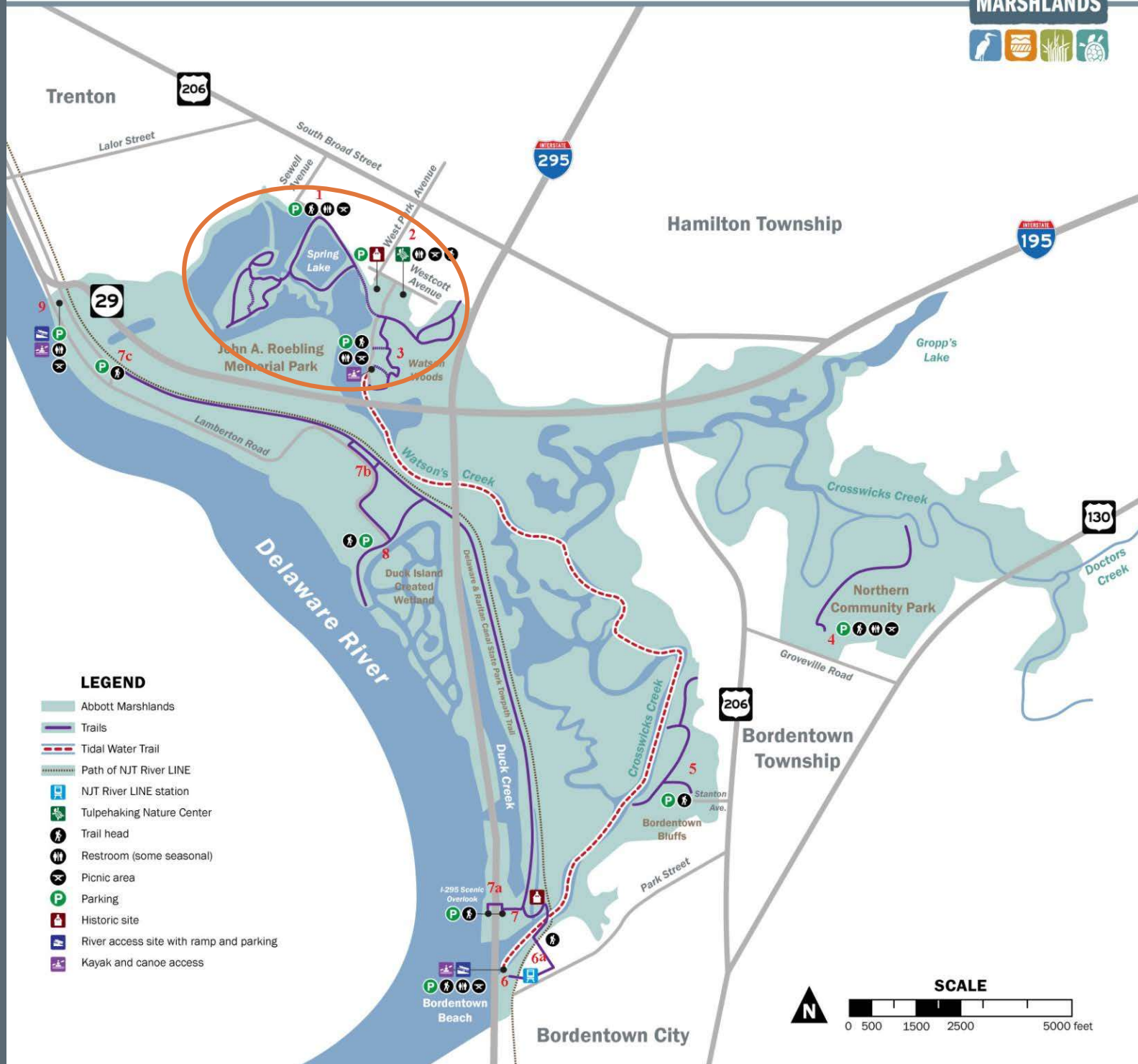
Forest Health Studies

NABA Annual Butterfly Count

Deer Spotlight Surveys



# Abbott Marshlands



# Introduction to Roebling Park



*Spring Lake*

←  
*Watson's  
Creek*

# Modern Ecological Significance of Abbott Marshlands (Roebbling Park)

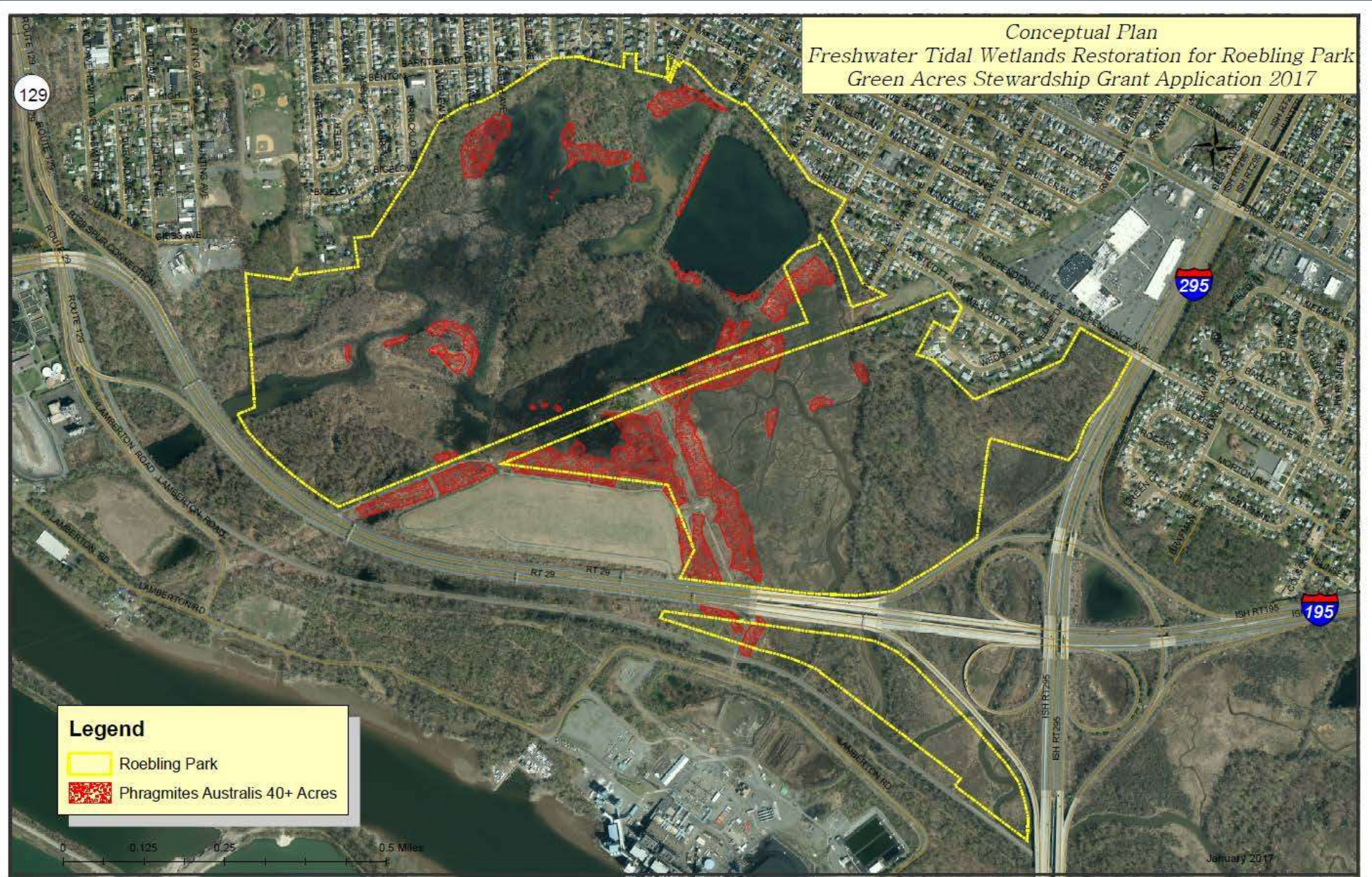


# What is a Freshwater Tidal Wetland?



American Coot, © Mary Anne Borge

# Roebling Park Restoration



# Phriend or Phoe: *Phragmites australis*



# Restoration Goals

The project's overarching goal is to restore the function of the tidal freshwater wetlands, improve native habitat for wildlife and enhance recreational opportunities for the community.



American Bittern (© Jeffrey Worthington)

